



Title: Handbook - DMSB

DOCUMENT CONTROL			
Doc. Reference	PL-AUS-DAR-015	Function	Operational Support
Revision Date	6	Group Owner	CEO Australia
Rev. Number	29/08/2022	Group Approver	Group Head of HSSEQ

No approved variances for this Plan currently

DOCUMENT REFERENCES

Internal References	<ul style="list-style-type: none"> • ERP-AUS-HSSEQ-001 - Emergency Response Plan (DMSB) • GOP-HSSEQ-019 - Hazard Identification and Control • GOP-HSSEQ-041 - Permit to Work • GOP-HSSEQ-024 - PPE Standard • PL-AUS-HSSEQ-012 - Adverse Weather Management - Aust • PL-AUS-HSSEQ-009 - Cyclone Management Plan - Darwin • PL-AUS-DAR-019 - Environmental Plan (DMSB) • PL-AUS-DAR-026 - Safety Management Plan (DMSB) • PL-AUS-DAR-004 - Spill Management Plan • PL-AUS-DAR-005 - Traffic Management Plan (DMSB)
External References	<ul style="list-style-type: none"> • Australian Standards AS4375 - 2002 Planning for Emergencies in Facilities • Marine Act • Marine Pollution Act • Marine and Pollution Regulations • Northern Territory of Australia - Workplace Health and Safety Act • Northern Territory of Australia - Work Health and Safety Regulations • Northern Territory Building Act and the Fire and Emergency Act • Northern Territory of Australia Disaster Act 2011 • Ports Management Act • Ports Management Regulations • Waste Management and Pollution Control Act

DOCUMENT SCOPE / PURPOSE

This Handbook provides a general guide to operations, the facilities and services provided by the DMSB.

REVISION HISTORY

Rev	Date	Comment
1	01/02/2016	Creation of procedure
2	13/03/2017	Full review
3	06/12/2019	Full review and Section 14 Documentation added
4	30/09/2020	Annual Review
5	14/09/2021	Annual Review
6	29/08/2022	Annual Review



Contents

1.0 Requirement of this Plan.....	3
2.0 Responsibility Summary	5
3.0 Definitions & Abbreviations.....	5
4.0 Darwin Marine Supply Base Infrastructure.....	5
5.0 DMSB Berth Bookings.....	6
6.0 Arrival Requirements	8
7.0 DMSB Services.....	11
8.0 Third Party Services	11
9.0 Safety Management	12
10.0 Emergency Response Plan	16
11.0 Marine Supply Base Security	17
12.0 Environmental Management.....	17
13.0 Amendments to DMSB Handbook	18
14.0 Documentation	18
Appendix A - Emergency Contact List.....	18

Title: Handbook - DMSB

1.0 Requirement of this Plan

ASCO Australia operates the Darwin Marine Supply Base (DMSB), located within Darwin’s Port (DP) East Arm Wharf (EAW) Terminal.

The development of the DMSB has assisted in cementing Darwin’s position as a major oil and gas hub, attracting new investment and business opportunities, creating significant employment for the local community.

This Handbook provides a general guide to operations, the facilities and services provided by the DMSB. More detailed information can be found at ASCO Australia’s website <https://ascoworld.com/locations/darwin>. ASCO’s DMSB Management Team is also available to provide additional support and guidance, contactable on (08) 9211 6841 during business hours.

It is important to note that vessels entering the DMSB are subject to operational controls as communicated and enforced by Darwin Port. For example, as directed by the Harbourmaster, pilotage is compulsory for all craft exceeding 35m LOA unless a valid Pilotage Exemption Certificate (PEC) is held by the Master. For further details regarding DP requirements while operating within Darwin Port, please refer to DP’s website at <https://www.darwinport.com.au/>

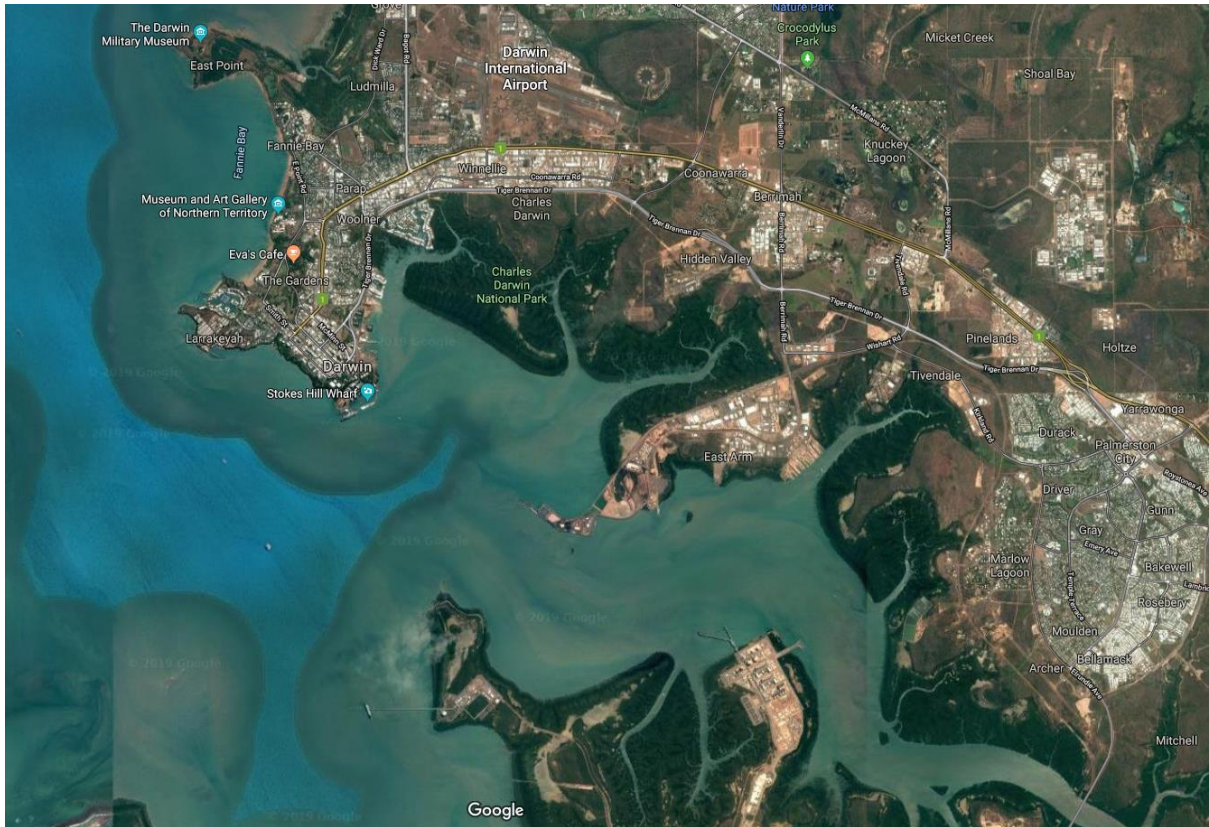


Figure 1 - DMSB is located at EAW within the Port of Darwin.

PL-AUS-DAR-015	Rev 6	29/08/2022	Page 3 of 18
Controlled copies can be found on the AIMS site - Printed copies are UNCONTROLLED			

Title: Handbook - DMSB



Figure 2 - DMSB is located alongside East Arm Wharf, approximately 2.km from East Arm Logistics Precinct.



Figure 3 - DMSB within the EAW precinct

PL-AUS-DAR-015	Rev 6	29/08/2022	Page 4 of 18
Controlled copies can be found on the AIMS site - Printed copies are UNCONTROLLED			



Title: Handbook - DMSB

2.0 Responsibility Summary

This document is relevant to the following roles:

- ASCO Personnel
- Stevedores
- 3rd Party Contractors
- Visitors
- Vessels
- Agents

3.0 Definitions & Abbreviations

Terms	Meaning
DP	Darwin Port
DMSB	Darwin Marine Supply Base
EAW	East Arm Wharf
ERP	Emergency Response Plan
ETA	Estimated Time of Arrival
ETD	Estimated Time of Departure
ERP	Emergency Response Plan
GRT	Gross Registered Tonnage
LOA	Length Overall
MTOFSA/R	Maritime Transport and Offshore Facilities Security Act and Regulations
MSIC	Maritime Security Identification Card
PEC	Pilot Exemption Certificate
PPE	Personal Protective Equipment
PTW	Permit to Work
PFD	Personal Flotation Device
UKC	Under Keel Clearance
SMP	Safety Management Plan

4.0 Darwin Marine Supply Base Infrastructure

The Darwin Marine Supply Base (DMSB) is the Port of Darwin’s primary facility supporting the offshore oil and gas industry. This multi-user berth facility opened in 2014 in response to increasing demand for support services required by the offshore oil and gas industry.

The DMSB facility includes:

- 265m of working berth space; the channel, turning basin and Berths 1 - 3
- Refer to Notice to Mariners for latest Declared Depths - <https://nt.gov.au/marine/marine-safety/guides-and-notice-to-mariners/port-of-darwin-local-notice>
- 4000m2 of laydown adjacent each berth to stage and facilitate efficient cargo transfer
- All three berths are capable of bunkering fuel and water
- Berth 1 heavy lift berth capable of operating with 500 tonne cranes
- Berth 2 and 3 available for drilling & chemical bulk loading/unloading direct to vessel
- External storage
- Office space and facilities for external workers
- State-of-the-art security system

Title: Handbook - DMSB

- Dangerous goods and waste containment bunds
- Emergency power to continue providing essential services.

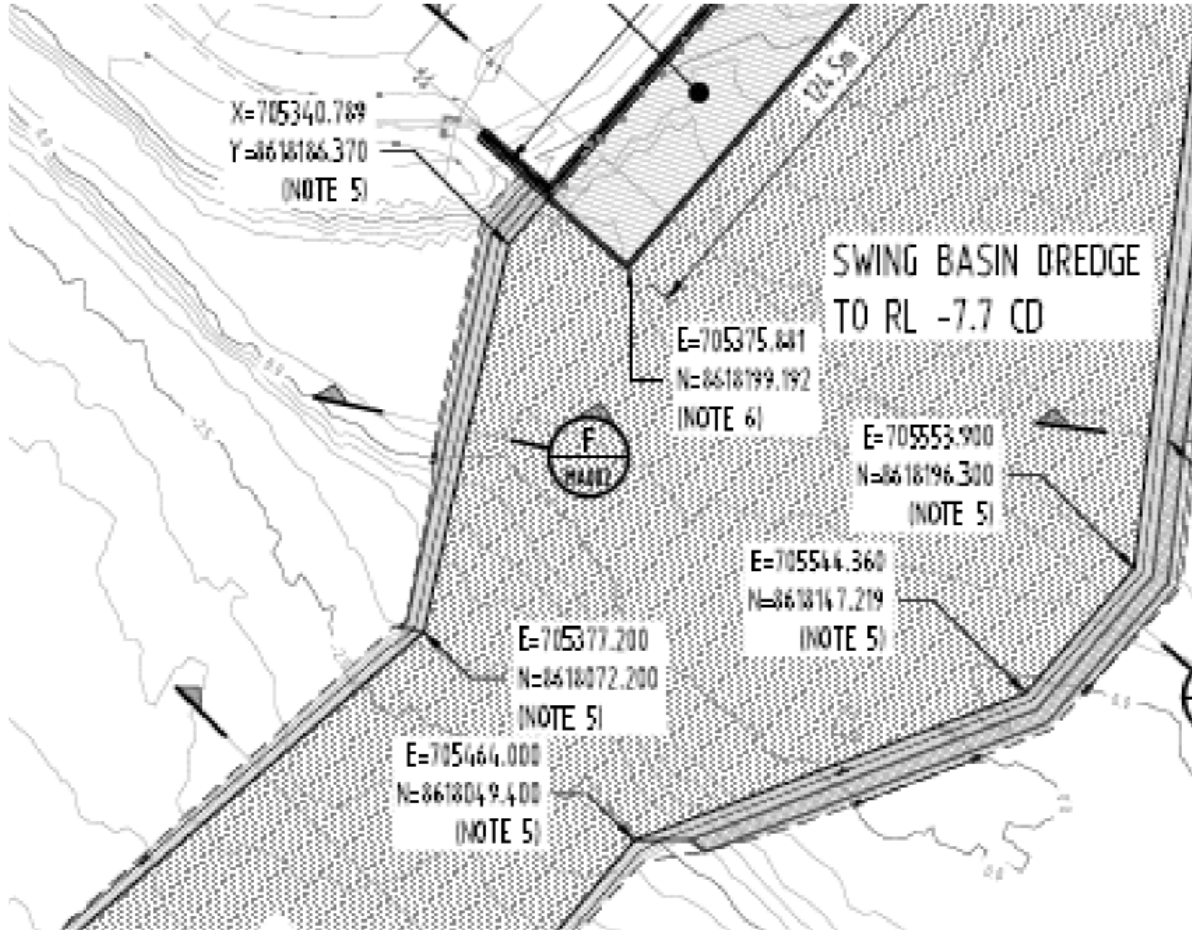


Figure 4 - Excerpt of As Constructed Dredged Channel Drawing. Complete drawing can be provided upon request. Please note this is provided for illustrative purposes only and should not be relied upon for navigational purposes.

5.0 DMSB Berth Bookings

Prior to commencing an approach towards the DMSB, the client or nominated agent must ensure that the vessel has ASCO’s approval to receive services at the DMSB. ASCO will send through the vessel berth metre marks and wharf position via email the day prior to arrival.

Scheduling of Berths

ASCO will endeavour to schedule vessel visits at the DMSB to best service industry requirements. Where demand for berths exceeds available supply on a given day and time, all efforts will be made to negotiate with all parties concerned to achieve an agreeable outcome to best service conflicting requirements.

Where requests clash and an outcome cannot be agreed with all relevant clients, ASCO will revert to the agreed berth booking process.

- Allocation Process

PL-AUS-DAR-015	Rev 6	29/08/2022	Page 6 of 18
Controlled copies can be found on the AIMS site - Printed copies are UNCONTROLLED			



Title: Handbook - DMSB

1. Emergency or safety related berth requirement
2. DMSB will not allocate berths based on client’s schedule/forecast
 - Client’s schedule will be used for planning purposes only
 - Berths will be booked in accordance with the vessel NOA/Vessel Operations
 - i.e., Cargo/Bulk/Chemical/Fuel/Stevedore & Crane Availability
 - Crew Change has no priority over operations
 - Vessel maintenance has no priority over operations
 - MSB Coordinator will check with Darwin Port before allocating any EAW Referrals

- Booking Deconfliction Principles

1. Booking Deconfliction Principles
2. Vessel Operations have priority over non activity periods greater than
3. 2 hours or more - Subject to tidal window open/close times
4. Vessel Operations have priority over Vessel Maintenance
5. Potential vessels visit extension / day
6. Must be managed by MSB Coordinator to facilitate extension however not guaranteed
7. If negotiation not successful than berth vessel will need to depart

With the DMSB facility designed to facilitate 12-hour vessel turnarounds, within reason, clients are required to plan their vessel visits to achieve their service requirements within this timeframe. Key performance indicators have been imposed upon stevedores to facilitate the achievement of this target i.e., continuous unloading/discharging periods of no more than 8 hours where reasonably appropriate.

Where vessel visits extend beyond the agreed berthing period, all efforts will be made by ASCO to negotiate with impacted parties to obtain agreement to extend the agreed berthing period. Should parties that expect to be impacted by such an extension, not be agreeable to the change, ASCO will request the berth to be vacated as scheduled.

All best endeavours will be made by the DMSB management team to satisfy client operational requirements and adhere to the above guidance notes. The client acknowledges and agrees that ASCO may; acting as a reasonable and prudent operator, refuse to berth the vessel or may change berth allocations as required in the best interest of the safety and security of the DMSB facility.

Any client being granted access to the DMSB will always be subject to availability (as determined by ASCO in its absolute discretion). ASCO does not guarantee that any client will obtain access to DMSB and the DMSB Services at the times or for the period requested by that client and ASCO will not be liable for any costs that may arise as a result of a berth allocation refusal or change.

Any new vessel that has not berthed at the DMSB before will be sent an information pack prior to their arrival, it is the master’s responsibility to read the document and ask ASCO DMSB Management if there are any enquiries.

Vessel Referrals

Vessel referrals to EAW or FHW may be approved by DMSB management on a case-by-case basis. DMSB are to be contacted to arrange referral and approval.

Scheduling Meetings

ASCO facilitate a weekly schedule meeting via TEAMS, focused on providing clear and transparent communications with respect to the scheduling of vessels and accompanying services at the DMSB. An open invitation stands for all clients and service providers, for more information, please contact the ASCO DMSB team. ASCO also circulate the DMSB Schedule and Traffic Management Plan on a daily basis Monday - Friday.

PL-AUS-DAR-015	Rev 6	29/08/2022	Page 7 of 18
Controlled copies can be found on the AIMS site - Printed copies are UNCONTROLLED			



Title: Handbook - DMSB

Compliance

All users must comply with a request made by ASCO in accordance with these DMSB Handbook terms.

Client Forecast Meetings

ASCO facilitate a monthly client forecast meetings via TEAMS, focused on future vessel port call volumes and client activities including Exploration, Development, Construction, Production and Decommissioning. The DMSB Manager will provide the client facility and port related updates that may impact on operations at the DMSB. This meeting is to assist ASCO with the forecast reporting to Darwin Port that consists with the vessel port call numbers arriving at the DMSB per month, per client.

6.0 Arrival Requirements

Darwin Port Notification Requirements

Users are required to notify DP of their intended arrival into Darwin Port through the lodgement of a Notice of Arrival on the DP's Klein Port system, accessible at <https://www.darwinport.com.au/> Vessels are also required to provide notification if they are carrying or loading packaged or bulk dangerous goods, with the relevant form available at <https://www.darwinport.com.au/policies-procedures-plans-and-forms> DMSB is required to be copied in on this correspondence to ensure awareness of packaged or bulk dangerous goods to be discharged or loaded through the DMSB.

DMSB Notification Requirements

Following the allocation of a berth, ASCO requires regular updates of a vessel's estimated time of arrival, and service requirements while alongside.

Formal notification is required 24 hours prior to arrival and is to include the following details:

- Confirmation of estimated time of arrival and expected departure
- Confirmation of pilot arrangements or confirmation of pilot exempt status
- Advice of any notable vessel deficiencies and any maintenance activities that will/could disable vessel and impact upon schedule
- Vessel security status and current crew lists, including crew changes if applicable
- Advice of any visitors, third party service providers or delivery vehicles requiring DMSB access in order to prevent delay in entry
- Confirmation of services required while alongside, e.g., cargo, stores, fuel, water, bulks etc.
- Declaration of dangerous goods (DG), with applicable DG forms completed and forwarded to MSB.security@ascoworld.com
- Confirmation of required permit to works (e.g., hot, working at heights, electrical, confined space, diving) while alongside
- Vessel inbound and outbound manifest
- Once vessel has departed, the final manifest is to be sent through for charging purposes.

Notification thereafter on variances that have the potential to impact upon the DMSB schedule are required as soon as possible, including any changes that may impact on the timeliness of services provided to the vessel while alongside. The client must also separately provide any notifications required to be provided to the DP and/or other regulatory bodies.

Vessel Transit and Berthing Requirements

Vessel Masters must ensure vessels do not commence approaching the DMSB until their berthing arrangements have been approved and confirmed by ASCO. It is the vessel master's responsibility to ensure there is a clear berth for their arrival; they are aware of the current declared depths within the Channel and DMSB Berths; and the DMSB Masters are responsible

PL-AUS-DAR-015	Rev 6	29/08/2022	Page 8 of 18
Controlled copies can be found on the AIMS site - Printed copies are UNCONTROLLED			



Title: Handbook - DMSB

for ensuring adequate under keel clearance (UKC). The masters are to take into account tidal movements, adhere to Notices to Mariners, DP port procedures and Harbourmasters Directions, at all times. Agents can refer to the DMSB Passage Plan that is available on the Darwin Port website: <https://www.darwinport.com.au/facilities-services/compliance-regulations/port-notices>.

The DMSB is subject to tidal restrictions. DP has issued a Tidal Window Calculator that enables ASCO, Clients and Agents to arrange berthage in the approved tidal windows. It is the vessel master's responsibility to ensure that they arrive and depart within the 'open green' tidal window times. This should be discussed at scheduling meetings or communications between parties 24 hours prior to arrival and departures. Please refer to Darwin Port Notice: Tidal Windows at Darwin Marine Supply Base <https://www.darwinport.com.au/facilities-services/compliance-regulations/port-notices>.

The DP Harbour Control manages all vessel movements with only one vessel allowed to traverse the channel at any point in time. There is a 30minute window between a vessel's arrival and departure at the DMSB. If there are any conflicting vessel movements, the DMSB scheduler will contact the agent or client to discuss changing the vessels arrival or departure to suite the tidal window.

Large LNG Tankers also transit the channel through the Darwin Port. ASCO discusses any foresee conflicting vessel movements with Inpex and DP ahead of the DMSB Schedule meeting and will discuss with the client/agent if the arrival or departure time require changing. Due to the tidal window requirements DMSB has priority to the channel if the window is only open less the 1.5hours.

DP is responsible for the efficient operations and control of vessel traffic entering, transiting and departing the Port of Darwin. Darwin Harbour Control provides continuous traffic monitoring of vessel movements within the port and DMSB to facilitate the safe and efficient passage of ships and to protect the environment and infrastructure of the port. Darwin Harbour Control maintains a continuous listening watch on Channel 16 (Distress, Safety and Calling) and Channel 10 (primary port operations working channel). For all vessel operations within the DMSB, ASCO and DMSB Security monitors all communication on Channel 74 - 24 hours a day, 7 days a week.

DP will consider whether a vessel is suitable to berth at the DMSB, taking into consideration the vessel draft, beam maximum breadth of 30m, GRT, maximum length is 100m, vessel manoeuvrability, tidal streams, and weather impacts. Also refer to Harbour Masters Direction outlaying weather and tug criteria if applicable. On assessment, the DP may impose access restrictions, assessed and advised on a case-by-case basis.

Tug Assistance

Where the wind exceeds 20 knots or where other unusual circumstances, a tug may be required for vessels that berth at the DMSB. Clients and Agents are required to arrange tug assistance and will need DP approval prior to the vessel movement. Refer to the Darwin Port Notice - Tug Assistance Requirements: <https://www.darwinport.com.au/facilities-services/compliance-regulations/port-notices>

Pilotage

Pilotage is compulsory for all craft exceeding 35m LOA unless a valid Pilotage Exemption Certificate is held by the Master. Notice of estimated time of arrival and request for a pilot must be made to the DP Shipping Scheduler not less than 24 hours before ETA at Channel Rock Buoy (No.6) Please refer to the DP website (<https://www.darwinport.com.au/>) for further and up to date information.

Vessel Berth 1 Overhang

DMSB may request for vessels to berth past the 0m mark in Berth 1 and overhang the wharf. A risk assessment with Darwin Port and ASCO has been completed for this mooring. The vessel will be berthed no further than the -12m mark. If Masters have any concerns or enquiries regarding the overhang, they are to contact DMSB Management prior to the vessel's arrival.

PL-AUS-DAR-015	Rev 6	29/08/2022	Page 9 of 18
Controlled copies can be found on the AIMS site - Printed copies are UNCONTROLLED			

Mooring Lines and Equipment

Vessel Masters are responsible for ensuring vessel mooring lines are in good condition and suitable for securing the vessel in potential high winds, weather and tidal streams. Vessels are required to have 2 sterns with 1 spring line and 2 bows with 1 spring line. Mooring lines should be adjusted appropriately and when necessary to accommodate changes in the tide and other port conditions ensuring rubbing on fender piles is kept to a minimum. A mooring watch must be maintained while the vessel is alongside. Where applicable, winches must be fully operational and in good condition.

In Berth 3 the mooring bollard is position behind the red line and is rated to 34T. As per the diagram below the limit would be due to the 50T bollard not the de-rated bollard. The load to the de-rated bollard would be in the order of 6T for a 40-knot wind. Most of the load will be taken by the 50T adjacent bollard due to the line geometry. Please see below the minimum required line set up for the mooring lines where a vessel is alongside Berth 3 at the 260m mark. Two Stern with one spring line and two Bow with one spring line keeping in mind that the secondary stern line is to be placed on a separate bollard to the de-rated 34T bollard.

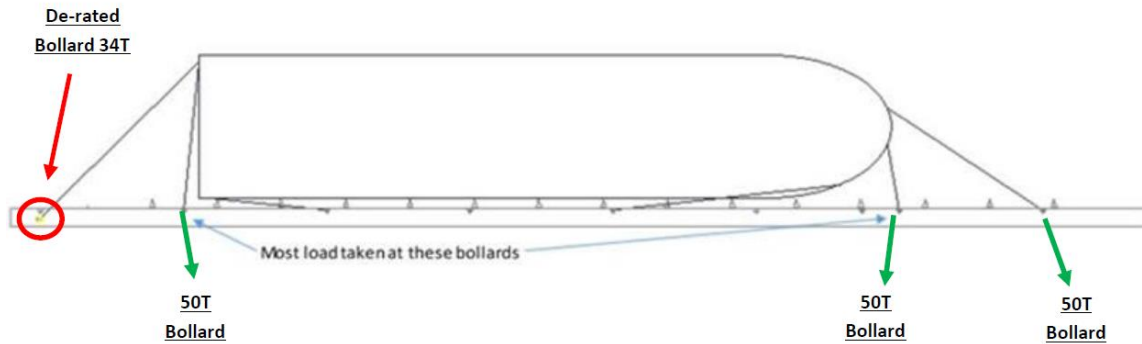


Figure 5 - Mooring Bollard positions on DMSB Wharf



Image 6 - Derated Bollard, Single Mooring Line Berth 3



7.0 DMSB Services

ASCO is to be advised of service requirements upon applying for a berth, with confirmation provided 24 hours prior to arrival, enabling ASCO to accurately schedule and manage the interactions and simultaneous operations occurring across the DMSB. The day's Traffic Management Plan is posted at the entrance to the DMSB and is updated throughout the day as required. The DMSB Traffic Management Plan will be sent out with the DMSB Schedule, and vessel metre marks each weekday.

Gangway Movements

Gangway movements are required to be organised with the stevedore provider prior to the vessel's arrival. It is the master's responsibility to check the gangway and ensure it is not sitting on the wharf. If the gangway is to be moved the master will need to contact their agent to organise. Any damage occurred to the wharf from the gangway will be required to be repaired at the agent's cost.

Potable Water

Potable water is available on all berths. All potable water requests should be advised when requesting a berth, with final confirmation of quantity required 24hrs before arrival. Once alongside, vessels are required to consult with DMSB Security to gain the required access. The DMSB provides a standpipe with a 3" male or 4" female camlock. Vessels provide the hose and assistance to connect the standpipe

Shore Leave and Crew Changes

Vessel crew disembarking and embarking vessels, for crew change are to be facilitated by the vessel agent and a crew change IN/OUT list is to be emailed to DMSB Security prior to the vessel's arrival. All vessel crew are to organise transfers through their agent or crew change bus. No taxis are allowed on site.

Crew disembarking for shore leave can arrange to meet a taxi at DMSB Security office, however they must walk from the vessel to security office wearing full PPE as significant hazards within the port environment need to be considered. All crew at the turnstile are required to provide their name to DMSB security and will be checked of the crew list when returning to site.

All vessel crew arriving at the DMSB will be checked off against the crew list provided.

8.0 Third Party Services

Stevedoring

LINX Stevedores and Qube Ports currently provide stevedoring services within the Port of Darwin.

Manifests, Crew & Visitors Lists, Dangerous Goods,

A manifest and dangerous goods documentation is required prior to discharge and loading. The client warrants that the manifest is true, accurate and complete at the time it is provided, with updates to be provided immediately should changes occur. Copies of manifests are held at Security in case of emergency, so they are readily available to handover to responding authorities. All final manifests are to be sent through to DMSB management within [48] hours of vessels departure from Darwin for charging purposes. Crew and visitors list are also required for security purposes prior to the vessel's arrival alongside.



Title: Handbook - DMSB

As noted above, vessels entering the Port of Darwin are required to declare the carriage of packaged or bulk dangerous goods, providing notification to the DP and DMSB using the relevant forms (<https://www.darwinport.com.au/policies-procedures-plans-and-forms>).

Bunkers

Fuel services are available on all berths with fuel supply to be arranged by a client or nominated representative directly with a fuel supplier. The ASCO DMSB scheduler is required to be notified [24] hours prior to the vessels arrival to ensure the permit to work is prepared for the bunkering service provider. Bunkering services are provided by Intertek.

Chemical and Drilling Bulks

Chemical and Drilling bulks services are available in Berths 2 & 3 with supply to be arranged by a client or agent directly with Baker Hughes. The ASCO DMSB scheduler is to be notified of any chemical or bulk requirements at the time of the vessel berth booking. ASCO will supply a permit to work for the loading of any chemical and drilling bulks, this permit is to be collected from MSB Security and sign onto prior to operations starting. Bulk loading via truck and tankers can be completed with prior approval from ASCO.

Vessel Maintenance and Repairs

Vessels tied up alongside the facility wishing to carry out repairs and maintenance must do so under their own controls however must first obtain the DMSB Permit to Work (PTW) for any high-risk operations and/or simultaneous operations. Notice must be given no later than [48] hours before the vessel's arrival alongside. All contractors must complete an DMSB induction, have their SWMS/JHA, plant register and licences through the DMSB management for approval prior to the PTW getting issued. All general maintenance requirements will be conducted under the DMSB PTW system; however, all hot work operations must comply with Darwin Port PTW procedure, and the vessel will need to notify DP of the hot works and complete their PTW.

Vessel Stores

The coordination of vessel stores and supplies are the responsibility of the client / agent. Clients must ensure adequate notice is provided to ASCO to ensure access and safe carriage to the vessel. All efforts need to be expended to ensure the delivery of vessel stores are accurately accounted for in the vessel port call schedule to avoid any delays.

9.0 Safety Management

ASCO is built on strong foundations of Our Values and Behaviours (Figure 7). They are the core values and beliefs that underpin everything we do, defining who we are, what we stand for and what we offer our customers. Aligned with our first value, work safe and live safe, ASCO is committed to embedding an uncompromising approach to our safety management systems, extending to the management of safety at the DMSB.

ASCO [PL-AUS-HSSEQ-004](https://ascoworld.com/locations/darwin), Safety Management Plan (SMP) available at <https://ascoworld.com/locations/darwin>, aims to meet and exceed the requirements of relevant safety legislation, regulation and codes of practice, adopting a consultative approach to engage all parties to achieve our goal - work safe and live safe.

In working towards this goal, site inductions are mandatory for all personnel that undertake work at the DMSB. Visitors will be required to complete a visitor induction. This will ensure all personnel have an understanding of and comply with site requirements. The below further outlines some of the key controls and processes. All personnel on site should be familiar with ASCOs Safety Management Plan and Key Values.



Life Saving Rules

HSSEQ



Figure 8 - ASCOs Life Saving Rules

Personal Protective Equipment

ASCO minimum [GOP-HSSEQ-024](#) PPE requirements for the DMSB are as follows:

- High visibility safety shirt (long sleeve) and long pants
- Steel cap boots
- Safety glasses
- Hard hats
- Gloves.

Further task specific PPE requirements must also be available for additional vessel activities, or where indicated by safety signage:

- Ear protection - when required as per legislation
- Safety harness for working at heights



Title: Handbook - DMSB

- PFD/Crew Saver - required beyond the red line on the quay surface or when working a vessel without adequate edge protection.

Hazard and Incident Reporting

ASCO Australia has a commitment to protect the health and safety of all people and property on or about the DMSB. Everyone operating within and visiting the DMSB have a responsibility to identify, rectify and report hazards that have the potential to cause harm to personnel, the environment, property and equipment, and/or impact on operations. Hazards that present an immediate danger and cannot be rectified should be immediately reported to **DMSB Security 0455 481 169**.

Incident Reporting is a fundamental component of a robust safety system, enabling the identification of root causes, implementation of corrective actions and communication of lessons learnt. All incidents occurring at the DMSB or whilst alongside must be reported as soon as practical to **DMSB Security 0455 481 169** where assistance will be coordinated as required. The type and scale of incident is actioned under the DMSB Emergency Response Plan. Waterside incidents are communicated to Darwin Harbour Control which will alert their incident management team. Landside incidents will be coordinated by ASCO with information to be relayed to DP.

Permit to Work

ASCO Australia has a comprehensive [GOP-HSSEQ-041](#) Permit to Work (PTW) programme designed to control high risk activities within the DMSB. ASCO requires all users of the DMSB to obtain an appropriate PTW before the following activities are undertaken:

- Electrical Work
- Confined Space Entry
- Diving Operations
- Hot Works - Facilities and Vessels
- Working at Height
- Abnormal Lifts
- Dual Crane Operations
- Fuel, Bulk and Chemical Transfers

All PTW requests are to be submitted to the ASCO DMSB Team with no less than [24] hours' notice to ensure no delay in issuance. ASCO requires the contractors HSSEQ documentation including SWMS/JHA, plant register, maintenance reports, training certification and equipment certification prior to any permit being approved or issued. Once all the documentation is received a PTW will be raised and given to MSB Security for the contractor to collect, sign on to and return once the operations have been completed.

Hot Works - Facilities

For all Hot Work operations on site, the contractor will work under the ASCO permit to work system. ASCO will need to provide approval prior to the PTW being issued. The contractor will need to notify MSB Security on Channel 74 at the start and finish of the hot works operations.

Hot Works - Vessels

For all Hot Works operations on board vessels the contractor will operate under the Darwin Port permit to work system. The permit to work will be required to be applied for by use of portal - <https://www.darwinport.com.au/node/365>. DP will need to provide approval prior to the PTW being issued. Once issued an automated email approval will be sent to DMSB Security. The vessel will need to notify Harbour Control on Channel 10 at the start and finish of the hot works operations as Darwin Port Notice PN/016.

PL-AUS-DAR-015	Rev 6	29/08/2022	Page 15 of 18
Controlled copies can be found on the AIMS site - Printed copies are UNCONTROLLED			



Title: Handbook - DMSB

Traffic Management

The [ERP-AUS-HSSEQ-001](#) DMSB Traffic Management Plan (TMP) is in place to reduce the likelihood of incidents relating to the movement of personnel and vehicles within the DMSB. Control over personnel, plant and equipment will mitigate the consequences of an incident. The day's TMP is posted at the entrance to the DMSB and is sent out via email with the DMSB schedule the day before; the TMP board will be updated with any changes required on the day. Review of the TMP formulates an important component of the DMSB induction.

All pedestrian traffic must comply with DMSB PPE requirements whilst working within the facility. Pedestrians moving from one area of the workplace to another must do so by using prescribed walkways where available. A high level of traffic will be experienced within the DMSB, with plant and pedestrians constantly interacting. It is imperative that all site personnel have an understanding of DMSB traffic guidelines:

- Site speed limit 10km/hr
- Seatbelts to be worn at all times
- No mobile phone usage when operating a vehicle or in an operational area
- Adhere to all traffic signage within the DMSB.

10.0 Emergency Response Plan

The [ERP-AUS-HSSEQ-001](#) DMSB Emergency Response Plan (ERP) , available at <https://ascoworld.com/locations/darwin> will assist to ensure effective response and recovery from emergency situations. The plan addresses preparedness initiatives including planning, training and exercises. The emergency plan has been designed to ensure the following:

- Early management and containment of emergency situations.
- Safe and orderly evacuation of people from the site as required.
- Speedy resumption of duties once safe to do so.

In addition to the ERP an [PL-AUS-HSSEQ-012](#) Adverse Weather Management Plan, covering cyclones, storm surges, warnings etc., is also available at <https://ascoworld.com/locations/darwin>

Should any personnel on site hear the emergency muster siren (a continuous siren) they should move to the nearest available muster point location. On hearing the emergency muster siren, vessel crew should conduct a vessel muster to determine who is on board and await contact from ASCO. All incidents and suspected emergencies should be immediately reported to DMSB Security 0455 481 169 or VHF Channel 74.

PL-AUS-DAR-015	Rev 6	29/08/2022	Page 16 of 18
Controlled copies can be found on the AIMS site - Printed copies are UNCONTROLLED			

Title: Handbook - DMSB



Figure 9 - DMSB Muster Location

11.0 Marine Supply Base Security

ASCO Australia has a Maritime Security Plan (MSP) in accordance with the requirements of the Maritime Transport and Offshore Facilities Security Act and Regulations 2003 (MTOFSA/R). This plan is approved by the Department of Home Affairs. ASCO will request the vessel to sign a Declaration of Security (DOS) that is valid for 12 months period.

Personnel operating within the DMSB will be required to have an MSIC card on display when working within the landside restricted zone or be under escort by an MSIC holder. No unauthorised packages are to be bought into the DMSB or onboard the vessels.

Should anyone observe any suspicious act, behaviours or persons, contact should be immediately made to **DMSB Security 0455 481 169**.

12.0 Environmental Management

ASCO Australia recognises the environmental and economic importance of operating in an environmentally sustainable and responsible manner. ASCO's [PL-AUS-DAR-019](https://ascoworld.com/locations/darwin) Environmental Management Plan (EMP) has been prepared to ensure all activities at the DMSB are continually monitored and assessed to ensure environmental compliance is assured. The EMP, available at <https://ascoworld.com/locations/darwin> sets the framework for operating, monitoring and auditing environmental activities within the DMSB.

All environmental incidents must be reported immediately to **DMSB Security 0455 481 169**

No vessel waste is to be left on the wharf without prior permission from the ASCO team, with waste disposal arrangements being pre-arranged.



Title: Handbook - DMSB

13.0 Amendments to DMSB Handbook

ASCO may, in its discretion, make necessary amendments to this document to accurately reflect the operations of the DMSB from time to time.

ASCO will use reasonable endeavours to consult with, and take into account the views of, the users and DP in relation to any proposed variation of this document but is not bound to accept the requests of those parties.

14.0 Documentation

A variety of documentation have been implemented by ASCO Australia to assist with work continuity. Some of these are listed below:

- [FRM-PL-AUS-DAR-015.07](#) - Vessel Schedule (DMSB)
- [FRM-PL-AUS-DAR-015.08](#) - Vessel Wharf Plan (DMSB)
- [FRM-PL-AUS-DAR-015.09](#) - Emergency and Dangerous Goods Site Plan (DMSB)
- [FRM-PL-AUS-DAR-015.10](#) - Traffic Site Map (DMSB)
- [FRM-PL-AUS-DAR-015.13](#) - Vessel Log Sheet (DMSB)

Appendix A - Emergency Contact List

Position	Name	Contact
MSB Security 24/7	Guard on Duty	0455 481 169
Port Facility Security Officer (PFSO)	Kylie Arnel Gareth Felton	0418 533 048 0427 709 097
Darwin Marine Supply Base Manager	Kylie Arnel	0418 533 048
Facilities Management Coordinator	Gareth Felton	0427 709 097
MSB Coordinator	Christie Beeson	0418 759 776
Regional HSSEQ & Training Manager	John Cowan	0448 148 957
CEO ASCO Australia	James 'Jock' Stuart	0448 127 563
Regional Operations Manager	Scott Rains	0403 809 725

***Please contact DMSB Security for reporting purposes (e.g., Emergencies, incidents, hazards, security breaches).**